



TABLE OF CONTENTS

A Letter from Leadership	3
A Letter from the Artistic Director	4
Season at a Glance	5
2024–2025 Season	6–7
Company Artists	10–11
Studio Company Dancers	12
Community Engagement	14–15
The Louisville Ballet School	16–17
In the Community	18–19
Financial Report	20
Philanthropic Support	21–26
Board + Advisory Leadership	27



Cover image:

Artists of Louisville Ballet in *502*, choreography by Ching Ching Wong to the music of Jack Harlow. Photo by Kateryna Sellers.

Page 2 image:

Jordan Noblelett in *Light / The Holocaust & Humanity Project*, choreographed by Stephen Mills. Photo by Kateryna Sellers.



Chief Executive Officer Leslie Smart
and Board President K. Shaver
Photo by Kateryna Sellers.

A LETTER FROM THE CEO + BOARD PRESIDENT

Dear Friends and Supporters,

As we reflect on the past season, we are filled with immense pride in the extraordinary progress we've made together. This journey has been one of growth, creativity, and resilience — a true reflection of the strength and passion of our dancers, artists, staff, and supporters.

This year, we witnessed unforgettable performances that left audiences captivated. Our dancers pushed their limits, embracing challenging roles and bringing fresh, bold visions to life. Their dedication and artistry continue to inspire us all.

We were also thrilled to introduce groundbreaking collaborations, including the world premiere of *502* with music by Jack Harlow and choreography by Ching Ching Wong, as well as the return of Resident Choreographer Adam Houglund with his new work, *Broken Totem*. These pieces helped expand our art form's reach, drawing new audiences. Patrons from 48 states and Canada traveled to experience the artistry of the Company, a true testament to the global impact of our work.

Our community engagement efforts also flourished, touching the lives of over 31,000 individuals and furthering our mission of Dance for EveryBODY through before and after-school programming, adaptive dance, and our Ballet Bound program.

The Louisville Ballet School has provided exceptional training to over 1,200 students this year, including wellness classes for teens and adults. The Adult Dance + Fitness Mind.Body.Balance. program offers Pilates,

yoga, tai chi, and somatic practices to build a healthier community. Recognized nationally for its classical ballet program, the School also nurtured the next generation of dancers with our summer intensive, which welcomed students from 26 states.

Behind the scenes, we've made significant progress in supporting our artists and fostering future talent. We've also worked hard to strengthen our financial position with record performance of net profitability in the last two years, ensuring that we remain a thriving and sustainable institution for years to come.

None of this would have been possible without you, our dedicated patrons. Your unwavering support has been vital in helping us reach these incredible milestones. It is your commitment that drives us to pursue excellence in every aspect of our work.

We look toward the future with excitement and anticipation. With your continued support, we are ready to reach new heights and create even more transformative experiences for you. Together, we will continue to celebrate the beauty and power of ballet, enriching lives and inspiring future generations.

Thank you for being an essential part of this remarkable journey.

Warmest regards,

Leslie Smart, CFRE
Chief Executive Officer

K. Shaver
Board President



A LETTER FROM THE ARTISTIC DIRECTOR

Dear Louisville Ballet Friends,

We are so thankful to have completed another season of creating beautiful moving art. It has been a whirlwind of adventure and transformation, and we are so glad we got to experience the magic together.

This season would not have been possible without the passion and creativity of the Louisville Ballet community — our family of artists, educators, students, designers, musicians, patrons, and people who continue to uphold the belief that dance has the power to make a difference in the world. Your support helps us stay en pointe as we look to a future that is innovative, inspiring, and inclusive

We enjoyed exploring new partnerships and fresh new voices this season. Our Triple Take mainstage production in November featured three world premieres, each representing a distinct genre of dance and music, including *Influences* by Harald Uwe Kern, *Broken Totem* by Adam Houglund, and *502* by Ching Ching Wong, set to the music of Louisville's own Jack Harlow. In the spring, we partnered with Kentucky Opera and Ballet Austin to produce *A Time Remembered: Two Holocaust Survivor Stories*. This deeply moving production featured the opera *Another Sunrise* and the ballet *Light / The Holocaust & Humanity Project*. These works, paired with a meaningful Remembrance Dinner honoring the late Minx Auerbach, created a profound sense of connection and community on both sides of the curtain.

Embarking on such a robust and exciting season also grew our Company in many ways. We hired new Company Artists — five highly-skilled male dancers who helped us strengthen our repertoire and performance abilities. We offered meaningful professional development opportunities for emerging Company Artists and enjoyed watching them excel in principal roles.

As we bid a bittersweet farewell to our 73rd season, we offer immense gratitude to Harald Uwe Kern on his departure. The past two seasons brought us together as Artistic Directors, but our collaboration and friendship span many years. I have appreciated Uwe in his many roles — first as Ballet Master, then as a coworker on the artistic team, then as fellow Artistic Director. He has been an expert teacher and coach, a talented and committed performer, and a dedicated dreamer, helping create art in these seasons that I will cherish forever. We will miss him greatly and are thrilled to watch his next chapter unfold as the Director of the School of Ballet San Antonio.

I also want to extend my gratitude to Helen Daigle, our Senior Rehearsal Director + Principal Repetiteur, for her tireless efforts to support the organization through her time, creativity, direction, collaboration, and enthusiasm. She has been and continues to be a vital part of bringing productions to life.

Looking toward the 2025-2026 Season, we continue to invest in the heart and soul of our Company. We have successfully increased compensation for our 24 Company Artists — and we will continue to advocate for their success in and outside of the studio.

Thank you to Company Artist Shelby Shenkman, who gave her final bow on our stage. We will miss her artistry. To all of the Artists of Louisville Ballet, thank you for your trust in and support of me. And thank you all, as always, for helping us make our dreams a reality.

Warmest regards,

Mikelle Bruzina
Artistic Director

2024–2025 SEASON AT A GLANCE



71,192

Total individuals served

43,705

Audience members

15,889

Free tickets offered

\$4M

Contributed income *

\$1.5M

Ticket revenue

24

Company Artists

92

Performances

48

States represented
at performances**



1,255

Students
enrolled

\$584K

Awarded in
scholarships



31,060

Total
participants

2,127

Students from Title I schools attended
free school matinee performances

3 mos–78 yrs

Age range
of enrolled students

27

Studio Company
Dancers on full
scholarship

32

In-school and
community
performances

722

Classes
taught

174

Unique
locations served

*including in-kind ** Patrons from Canada also attended

studio connections



—
LOUISVILLE
BALLET STUDIOS

9/13-9/22

triple take



—
THE BROWN THEATRE

11/1-11/3

THE BROWN-FORMAN NUTCRACKER

Choreography by Val Canzoneri

—
WHITNEY HALL

12/13-12/24



a time remembered

TWO HOLOCAUST SURVIVOR STORIES

—
WHITNEY HALL

2/1-2/2



choreographers' showcase

—
LOUISVILLE
BALLET STUDIOS

2/21-3/2




cinderella

—
WHITNEY HALL

4/4-4/6



studio connections	1,074
triple take	2,748
 THE BROWN-FORMAN NUTCRACKER <small>Choreography by Val Caniparoli</small>	32,299
a time remembered	2,329
choreographers' showcase	1,010
cinderella	4,759
TOTAL TICKETS	44,219



Company Artists Mark A. Krieger Jr.
and Shelby Shenkman in Alun Jones'
Cinderella. Photo by Kateryna Sellers



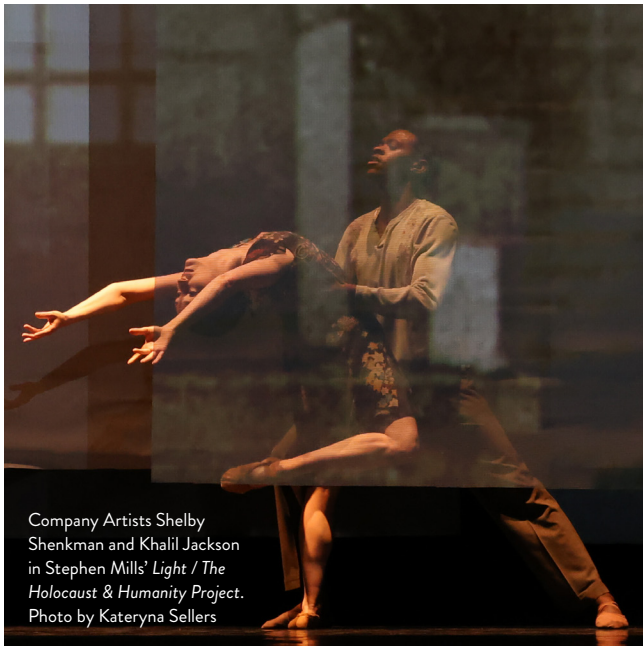
Company Artist Leigh Anne Albrecht
in Adam Houghland's *Broken Totem*.
Photo by Kateryna Sellers



Company Artists
Caleb Emory and
Jordan Noblett in
Cinderella. Photo by
Kateryna Sellers



Company Artists Anna Ford and Nicholas
Bradley Gray in *The Brown-Forman
Nutcracker*, choreography by Val Caniparoli.
Photo by Kateryna Sellers



Company Artists Shelby
Shenkman and Khalil Jackson
in Stephen Mills' *Light / The
Holocaust & Humanity Project*.
Photo by Kateryna Sellers



Company Artist Daniel Scofield
and Resident Character Artist
Philip Velinov in *Cinderella*.
Photo by Kateryna Sellers

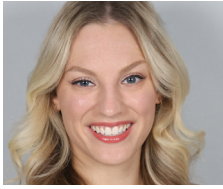


Artists in Leigh Anne
Albrechta's *CLEAVE*.
Photo by Kateryna Sellers



Company Artists Elizabeth
Abbeck and Daniel Scofield in
Christian Chester's *Pas Noir*.
Photo by Kateryna Sellers

COMPANY ARTISTS



**ELIZABETH
ABBICK**
Joined Company:
2022
Hometown:
Overland Park, KS



**LEXA
DANIELS**
Joined Company:
2016
Hometown:
Stoneham, MA



**LEIGH ANNE
ALBRECHTA**
Joined Company:
2009
Hometown:
Fremont, OH



**CALEB
EMORY***
Joined Company:
2024
Hometown:
Corpus Christi, TX



**FLETCHER
BARR***
Joined Company:
2024
Hometown:
Owensboro, KY



**ANNA
FORD**
Joined Company:
2023
Hometown:
Lilburn, GA



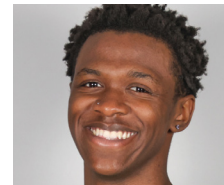
**NICHOLAS
BENTZ***
Joined Company:
2024
Hometown:
St. Louis, MO



**NICHOLAS
BRADLEY GRAY***
Joined Company:
2024
Hometown:
Milwaukee, WI



**SARAH
BRADLEY**
Joined Company:
2022
Hometown:
Cincinnati, OH



**KHALIL
JACKSON**
Joined Company:
2023
Hometown:
Dallas, GA



**CHRISTIAN
CHESTER**
Joined Company:
2023
Hometown:
Sunbury, OH



**ALEXANDER
KINGMA**
Joined Company:
2023
Hometown:
Lafayette, IN



**CAITLIN
KOWALSKI**

Joined Company:
2021

Hometown:
Radcliff, KY



**ALEKSANDR
SCHROEDER**

Joined Company:
2019

Hometown:
Anderson, IN



**PHILLIP
VELINOV**

Joined Company:
2006

Hometown:
Sofia, Bulgaria

Headshot by
Andrew Kung



**MARK
KRIEGER**

Joined Company:
2012

Hometown:
Alexandria, VA



**DANIEL
SCOFIELD**

Joined Company:
2022

Hometown:
Louisville, KY



**ADDISON
MATHES**

Joined Company:
2023

Hometown:
Corydon, IN



**SHELBY
SHENKMAN**

Joined Company:
2016

Hometown:
Boca Raton, FL



**JOEL
MORIN-KENSICKI***

Joined Company:
2024

Hometown:
Chapel Hill, NC



**ASHLEY
THURSBY**

Joined Company:
2008

Hometown:
Richmond, MO



**JORDAN
NOBLETT**

Joined Company:
2023

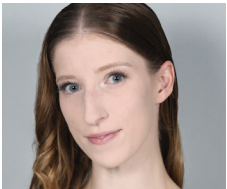
Hometown:
Gastonia, NC



**AMBER
WICKEY**

Joined Company:
2022

Hometown:
Tenafly, NJ



**ELEANOR
PRINCE**

Joined Company:
2023

Hometown:
Louisville, KY



**BRIENNE
WILTSIE**

Joined Company:
2018

Hometown:
Pittsburgh, PA

* New Company Artist

STUDIO COMPANY DANCERS



The Louisville Ballet Studio Company is a four-year, tuition-free program designed to provide professional-caliber training in technique and artistry in preparation for a professional career in classical ballet and versatility in various derivative styles. The program is a post-secondary extension of the Pre-Professional Program at The Louisville Ballet School and its emerging artists are truly the bridge between the School and Company.

LEVEL 10

Claire Churchill, Adrah Cook, Hope Farrar, Elizabeth Hines, Shayda Honda, Chloe Puffer, Paige Riffer, Mackenzie Wandel

LEVEL 9

Emmaline Fontanilla, Joe Henn, Danika McNees, Andrey Obolonchik, Ava Ownby, Ezra Paisley, Sameer Rhodes, Natalie Schreiner, Marissa Soluri, Ida Soranno, Gaven Stevens

LEVEL 8

Sarah Hutchison, Gwyneth Holliday, Ava Dhira Metzger, Guinevere Nelson, Kirsten Smerud, Abigail Wyrrick

LEVEL 7

Athena King, Makenna Lalonde

GO BEHIND THE CURTAIN

For decades, Louisville Ballet Partners has played a vital role in supporting the company behind the scenes.

Partners support the well-being of dancers and the success of the company in many ways, including artist care, fundraising, special events, and more. We would not be able to do what we do without the vital support of these volunteers.



**SCAN HERE
TO LEARN MORE**
LOUISVILLEBALLET.ORG/VOLUNTEER



CORPS de LBS
community organization representing
partners of the school

THANK YOU

to our CORPS de LBS members who worked diligently all season to build community and foster a supportive network for students, parents, faculty, and staff of The Louisville Ballet School.

To learn more about CORPS de LBS, visit
<https://www.thelouisvilleballetschool.org/corps-mission>



Participants of Louisville Ballet's Community Engagement Adaptive Dance Showcase.
Photo by Josh Mauser.

COMMUNITY ENGAGEMENT

Louisville Ballet provides community engagement programming through a wide range of in-school residencies, performance assemblies, before/after-school programs, student matinees, adaptive dance partnerships, community workshops, audience engagement initiatives, scholarship opportunities, and virtual programming. We strive to reach the widest possible audience through our programs to ensure access and inclusion while building diversity in the world of ballet.

BALLET BOUND PROGRAM

Ballet Bound provides young dancers from across Greater Louisville the opportunity to study classical ballet free of charge in a professional setting. Ballet Bound is designed to build diversity in the world of ballet while serving as a pathway for dancers to The Louisville Ballet School, the Louisville Ballet Studio Company, and eventually a career with Louisville Ballet. Currently, 21 Ballet Bound graduates are on a full scholarship at The Louisville Ballet School.

MOVING STORIES PERFORMANCES

Moving Stories is an introduction to ballet for young audiences, serving elementary schools across the region. Presented as an assembly-style in-school performance featuring dancers from The Louisville Ballet Studio Company, the program includes a ballet class demonstration, a short story ballet, and an opportunity for select students to join the dancers on stage. Educators receive an in-depth online study guide to enhance the experience for students in the classroom. In April 2025, Louisville Ballet presented 30 performances of *Moving Stories: Charlotte's Web* across three counties, reaching nearly 7,000 students.

STUDENT MATINEE PERFORMANCES

Student matinees are designed to give students and educators a behind-the-scenes look at Louisville Ballet through an interactive performance and access to an online study guide. In December 2024, Louisville Ballet hosted sold-out student matinee performances of *The Brown-Forman Nutcracker* in Whitney Hall at The Kentucky Center, reaching nearly 6,000 students. The Bridge the Gap program made it possible for 2,127 students from Title I schools to attend for free.

IN-SCHOOL RESIDENCIES + BEFORE/AFTER SCHOOL PROGRAMS

Louisville Ballet provides in-school residencies for students to engage in dance education workshops during their school day, using both standalone dance content and integrated curriculum, engaging students in a creative learning environment while exploring ballet basics and other dance styles. Residency programs operated in five schools across Jefferson County and Southern Indiana. Before and after-school dance programs provide dance as enrichment for select students in local schools during the school year. Participants have opportunities to perform and attend Louisville Ballet performances at no cost. The 2024–2025 school year included programming at seven schools across Jefferson County.

ADAPTIVE DANCE

Louisville Ballet believes in the power of dance and strives to make the art form accessible to all through our Adaptive Dance Programs, which serve children and adults with disabilities. Organizations served in the 2024-2025 season include Heuser Hearing and Language Academy, Visual Interventions and Parental Support (VIPS), Down Syndrome of Louisville, Dreams with Wings, Summit Academy, Home of the Innocents, Berrytown Community Center, Ahrens Educational Resource Center, ElderServe Senior Center, and Altenheim Senior Healthcare Community. Participants are immersed in movement residencies and have opportunities to attend Louisville Ballet performances. In April 2025, Louisville Ballet hosted our inaugural Adaptive Dance Showcase at our downtown studios, inviting students from our Adaptive Dance program sites to come and perform for their families and then enjoy a Sensory Friendly performance of *Charlotte’s Web* by the Louisville Ballet Studio Company.

SENSORY FRIENDLY

The Sensory Friendly performance of *The Brown-Forman Nutcracker* allows everyone to experience this magical holiday tradition in a specially designed atmosphere that is comfortable, inclusive, and safe for individuals who have sensory sensitivities. Participants receive access to social narratives, tactile to-go bags, and have the opportunity to meet dancers in the lobby before the show. Nearly 800 patrons attended the performance in December 2024, our highest attended performance since the program’s inception in 2018, reaching our capacity for this specialized program for patrons with disabilities.



Elementary school children participating in a Louisville Ballet Community Engagement in-school residency. Photo by Kateryna Sellers

PARTICIPANT DEMOGRAPHICS

65%

from under-resourced communities

28%

Individuals with disabilities

19%

Multi-language learners

31,060 Individuals served

722 Classes taught

112 Schools participated

56 Unique zip codes

30 In-school and community performances

21 Ballet Bound Continuing Scholarships

15 Library events

6 Park audition workshops

Students performing at Spring Dance Festival.
Photo by Kateryna Sellers



THE LOUISVILLE BALLET SCHOOL

The 2024-2025 school year continued to bring growth in many ways. The two family fundraising groups merged to create the Community Organization Representing Partners of the School (CORPS de LBS). This united team reached record numbers with the annual Nutcracker Gift Shop, surpassing \$108,000 in sales. These dollars benefit all of our students and brought professional development opportunities for our faculty as well as guest faculty for master classes across multiple programs.

The 2025 Summer Intensive brought in a record 120 talented students from 25 states. Students received high-quality technique and repertoire training from Louisville Ballet faculty and guest instructors Brandon Ragland and Ashley Hamann alongside Company Resident Choreographer Andrea Schermoly. Former Louisville Ballet Company Artist and Pre-Professional Program Manager Brandon Ragland is now Artistic Director of Dayton Ballet. Ashley Hamann is the Dance Program Manager at the Center of Creative Arts in St. Louis.

1,255 Students enrolled in classes

3 mos–78 yrs Age range of enrolled students

\$584,000 Awarded in scholarships

25% of scholarship awardees identify as male

40% Average scholarship value

39 Studio Company Dancers

The Louisville Ballet Youth Ensemble (LBYE) presented its annual *Fall Showcase* performance at the Ogle Center on the campus of Indiana University Southeast. This move from the studio to a proper theater was greatly needed to ensure the performance opportunities provided to the students are developing them to be the artists of tomorrow. Dancers from the LBYE were selected to attend prestigious Summer Intensive Programs across the country, including San Francisco Ballet, Oklahoma City Ballet, Kansas City Ballet, Cincinnati Ballet, Nashville Ballet, Atlanta Ballet, Tulsa Ballet, Sacramento Ballet, Nutmeg Conservatory, and Dayton Ballet, to name just a few. During the annual Regional Dance America/Southeast Festival, the LBYE presented two works created by student choreographers for an audience of their peers in Memphis, Tennessee. Additionally, the dancers presented *In Search* by former Company Artist David Senti in the Gala during the festival.

The annual *Spring Dance Festival*, presented at the Brown Theatre, highlighted movers from the Children's Program all the way through the Adult Dance + Fitness Mind.Body.Balance. program. The 2024 *Spring Dance Festival* culminated in the premiere of the School's first-ever, school-wide *Swan Lake*, created especially for the students of The Louisville Ballet School. Introducing our dancers and their families to this epitome of the classical tradition was transformational for all.

The Studio Company featured 28 dancers for the 2024–2025 season: 22 women and six men. Mikelle and Christy continue to hone the program to best serve both the participating dancers and the Company.



Louisville Ballet Youth Ensemble dancers performing in *Swan Lake*.
Photo by Kateryna Sellers



Studio Company dancers in Mikelle Bruzina's *Woven Vignettes*. Photo by Kateryna Sellers



Students performing at *Spring Dance Festival*.
Photo by Kateryna Sellers

LOUISVILLE BALLET IN THE COMMUNITY

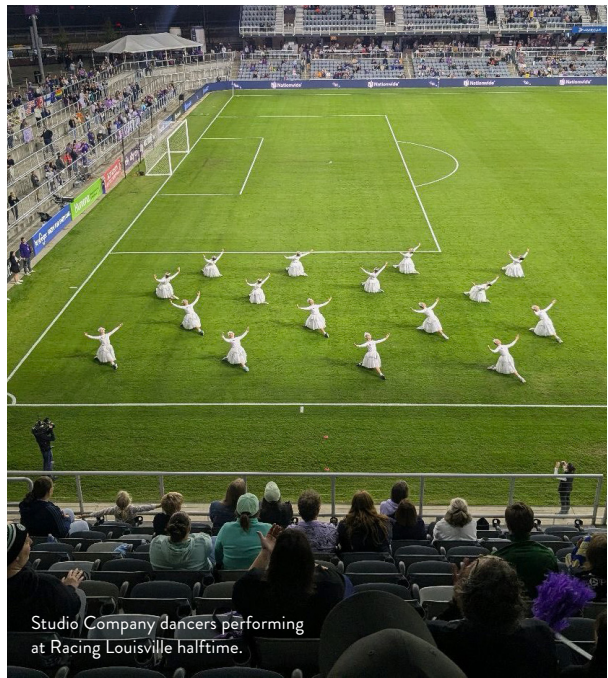
From stages to gardens to soccer fields and beyond, our Company and Studio Company dancers made moving art across the city this season. We also gathered with cherished members of the community at the Remembrance Dinner in honor of Minx Auerbach.



Studio Company Dancers performing at the Fund for the Arts Celebration of the Arts. Photo by Helen Daigle.



Amber Wickey and Aleksandr Schroeder in 502 at Raise the Barre. Photo by The Voice-Tribune.



Studio Company dancers performing at Racing Louisville halftime.



Studio Company dancers
at Norton Children's
Hospital's Snow Ball.
Photo by Mikelle Bruzina.



Pamela Thompson and K. Shaver
attending Louisville Ballet's
Remembrance Dinner.
Photo by Josh Mauser.



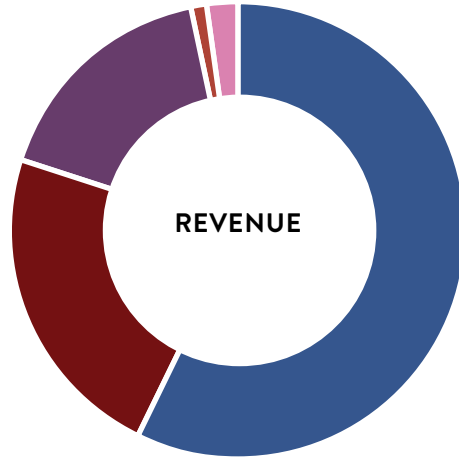
Sharon Potter, Stephen Mills,
Harald Uwe Kern, Henry Potter,
Natalia Ashikhmina and Phillip Velin
at the Remembrance Dinner.
Photo by Josh Mauser.

2024–2025 FINANCIAL REPORT

REVENUE

■ Grants, Contributions & In-Kind	\$3,810,571
■ Earned Revenue (Performance)	\$1,506,493
■ Earned Revenue (School)	\$1,108,591
■ Community Engagement	\$80,307
■ Other	\$132,183

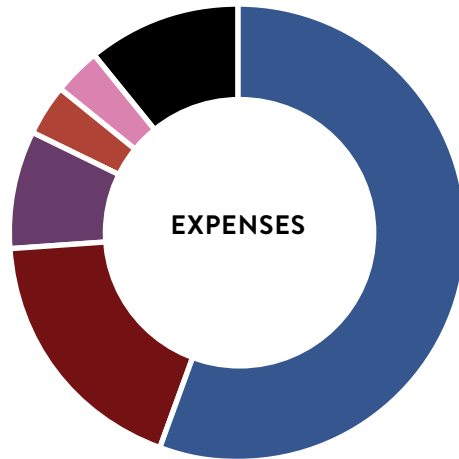
TOTAL **\$6,638,145**



EXPENSES

■ Performances	\$3,705,511
■ School	\$1,213,642
■ General Admin	\$540,836
■ Fundraising	\$253,041
■ Community Engagement	\$220,757

TOTAL **\$5,933,787**



■ **NET INCOME / SURPLUS** **\$704,358**

CORPORATE + FOUNDATION DONORS

\$100,000 +

JENNIFER A. MOORE
FOUNDATION



Jewish Heritage Fund



BROWN-FORMAN

\$50,000 +



Blue Grass MOTORSPORT
Built on Performance



THE SHUBERT
FOUNDATION INC.



Trager
Family
Foundation

WHIPPOORWILL FAMILY
FOUNDATION

\$25,000 +



FIDDLEHEAD
FUND

LOUIS AND LEE
ROTH FAMILY

THE GHEENS FOUNDATION



THE JOHANNA HOWARD AND
HOPE SMITH FOUNDATION

\$10,000 +



SHAPIRA
FOUNDATION



THE TUCKER LAW FIRM

STERLING
THOMPSON
COMPANY

DONALD H.
BALLEISEN
MEMORIAL FUND



KLEIN FAMILY
FOUNDATION



\$5,000 +



ARTHUR K. SMITH
FOUNDATION



THE
GALT HOUSE
Legendary • HOTEL • Louisville



BASS FAMILY
FOUNDATION

SHADY RAYS®



JASTEKA
FOUNDATION

\$2,500 +



WILLIAM D. NEFZGER
PLLC

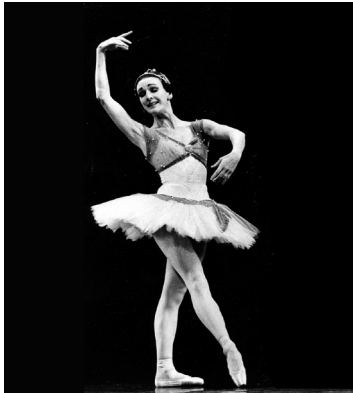
\$500 +

R.W. MARSHALL FOUNDATION HALLWAY FEEDS PORCINI/FARMER CHILDREN'S FOUNDATION
OLD NATIONAL BANK VINCENZO'S WILLIAM E. BARTH FOUNDATION ROTH FAMILY FOUNDATION
WELCH PRINTING ROBERT I. LERMAN FAMILY FUND BARBARA F. CULLEN FUND

INDIVIDUAL CONTRIBUTORS



Photo by
Kateryna Sellers



STARR SOCIETY

The Starr Society was created to honor and celebrate the achievements of Helen Starr, who is a true gift to the dance world and a legend to Louisville Ballet. Membership is reserved for donors who contribute at least \$10,000*. We are grateful to the following benefactors who pay tribute to the tradition of excellence she helped establish within our Company. For more information, please contact Regan Nichols, rnichols@louisvilleballet.org

ARABESQUE SOCIETY

The Arabesque Society is a group of dedicated benefactors who have made arrangements in their estate plans to support Louisville Ballet in the future. For more information on how to include Louisville Ballet in your estate plans, please contact Regan Nichols, rnichols@louisvilleballet.org

\$100,000+

JENNIFER A. MOORE
THE LATE LORRAINE W. AND CLARENCE H. SHORT

\$50,000+

ANONYMOUS
DR. AND MRS. STEVEN EPSTEIN
ELLEN AND MAX SHAPIRA
JIM AND MARIANNE WELCH
WILLIAM AND SUSAN YARMUTH

\$25,000 +

ANONYMOUS
HANS AND THE LATE KATHY BRUEHL
SUSAN G. FORD
PETER ASHBY HOWARD AND JODY HOWARD
BUCK AND JOSIE WISEMAN

ANONYMOUS (3)
LEE PURCELL BEST
THE LATE ELAINE BORNSTEIN
JAMIE JARBOE AND DOUGLAS BUTLER
WALTER CLARE
DR. CLAUDIA CRUMP
JOHN R. CUMMINS
THE LATE JUDITH R. FORD
SUSAN GRUBBS
THE LATE MICHAEL C. JORDAN
THE LATE DR. JAMES B. AND MRS. HELEN K. LONGLEY

\$10,000+

ANONYMOUS
BROOKE BROWN BARZUN AND MATTHEW BARZUN
EDITH BINGHAM
NINA BONNIE
JANET DENUYL
MARY MOSS GREENEBAUM
MATTHEW AND LENA HAMEL
PAULA AND FRANK HARSHAW
JIM AND SARA HAYNES
EMMA C. HUTCHENS AND KELSEY JONES
AUGUSTA BROWN HOLLAND AND GILL HOLLAND, JR.
ALLISON AND TOM O'GRADY
JAMES A. PITT
CAROL C. PYE
DR. GREG BROWN AND SCOTT ROGERS

THE LATE BETTY AND DAVID MILLS
MARTHA NICHOLS
D. PATTON PELFREY
RONALD RUBIN
THE LATE LORRAINE W. AND CLARENCE H. SHORT
LESLIE AND JOHN SMART
LEE AND JOHN STOUGH
THE LATE ROSE MARY TOEBBE
JAMES AND ELIZABETH VOYLES

VIVIAN RUTH SAWYER
JULIE AND CHRIS SOLURI
DR. AND MRS. DAVID TUCKER
JAMES AND ELIZABETH VOYLES
DR. ALAN ROTH AND FAYE WEINBERG
MARTHA ANN AND KENNETH WERTZ

INDIVIDUAL CONTRIBUTORS

DIRECTOR \$5,000 +

ERICA BACHELOR
DONALD G. WENZEL JR AND
RONALD L. DARNELL
SHIRLEY DUMESNIL
JANE AND BERT EMKE
SHERRY M. AND JOSEPH FELDPAUSCH
THE LATE JUDITH R. FORD
MORIAH OGILVIE AND WILLIAM HOLTON
ALFRED AND ANNE JOSEPH
ALAN AND SHELLY KAMEI
JAMES AND IRENE KARP
DR. THOMAS LOEB
KAREN G. AND RICHARD J. MAZZONI
SHARON AND HENRY POTTER
KATHRYN SHAVER
LESLIE AND JOHN SMART
HELEN STARR
LEE AND JOHN STOUGH
BILL AND MARY STRENCH
CARL AND ELLEN THOMAS
JANE WELCH
CHERI AND JIM WHELAN
MAIDA WOOD

ARTIST \$2,500–\$4,999

JOHN DOWNARD AND
MARY ALEXANDER
ELAINE BRYAN
WALTER CLARE
CAROLLE JONES CLAY AND K
ENNETH CLAY
LEE DORSEY
CHERYL AND EUGENE GILCHRIST
WANDA CAROL HENDRIX
JANICE CARTER LEVITCH HUMPHREY AND
STEVE HUMPHREY
DONALD KAVANAUGH
FAIRLEIGH AND ABBY LUSSKY
LARRY SHAPIN AND LADONNA NICOLAS
DR. KIMBERLY BOLAND AND
CONOR O'DRISCOLL
MICHAEL PITT
ANTON SKOBELEV

POINTE \$1,500–\$2,499

JOE AND SUE ALBRECHTA
ROBERT AND KAREN CHATHAM
REV. JOHN G. EIFLER
TURNER BERRY AND KENDRA FOSTER
GORDON AND CHRIS GERWIG
SUSAN AND WILLIAM GRUBBS
OWEN AND ELEANOR HARDY
CAROL HARPER
MARY HARPER
DR. MARY HARTY AND
MR. JAMES HARTY
MATHEW AND CARRIELEE KOOLE
DR. CHRISTOPHER KRIEG AND
ALICIA KRIEG
GUY AND ELIZABETH MONTGOMERY
CAREY PILO
VICKI AND JUNE PRINCE
ALI AND TYLER SHARPE
MARY STITES
PAMELA AND PAUL THOMPSON
JOAN WHITTENBERG

DANCER \$1,000–\$1,499

ANONYMOUS
THE HONORABLE JERRY ABRAMSON AND
MRS. MADELINE ABRAMSON
MICHAEL G. ALT
ANDY AND MICHELLE ARNOLD
KATHLEEN BERGER
LISA BIDDLE-PUFFER
STEPHEN REILY AND EMILY BINGHAM
MOLLY BINGHAM
ALAN AND SANDRA BRYANT
DR. JEFFREY CALLEN AND
MRS. SUSAN CALLEN
MARIA CILIBERTI
COURTNEY COMBS
ROBERT COX
FRANCES DUMBAUGH
HOLLY BROCKMAN-JOHNSON AND
STEVEN FICK
MOIRA C. FIEDLER
LINDA FINNEY
MS. PEGGY FOWLER
VINCENZO AND PATRICIA GABRIELE
NICOLE GEORGE
MICHAEL AND PAULA GRISANTI
ROGER AND KAREN HALE

DEANA HALL
ANNE AND MIKE HAMPTON
KATHY HOGAN
CHERYL AND LARRY HUGHETT
KIMBERLY HUTCHISON
RHONDA AND BRECKINRIDGE JONES
HUGH JONES
ALBIN B. HAYES, JR.
DAVID AND KARAN KNIGHT
KAREN KOSHEWA
SHERYL SNYDER AND JESSICA LOVING
REPRESENTATIVE MARY LOU MARZIAN AND
MR. BILL MARZIAN
ROY MATTINGLY
RONALD AND MARY MCKULICK
DR. ROY MECKLER AND MRS. LYNN MECKLER
JONATHAN AND LISA MILLER
MS. PENELOPE T. MORTON
R. CHARLES AND SALLY MOYER
MARY AND TED NIXON
KATHLEEN RENO AND THOMAS PAYETTE
SHARON P. PFISTER
MARCELLE GIANELLONI AND
CONRAD J. PRESSMA
JANET W. RINK
JACQUELINE ROSKY
ARTHUR AND SIMONE SALOMON
DR. MYROSLAVA ROMACH AND
DR. EDWARD SELLERS
KAREN AND FARRELL SMITH
CLAIRE AND TONYA STIVERS
MARGARET THOMAS
REBECCA TERRY AND PETER THOMPSON
MR. DAVID A. JONES JR AND
MS. MARY G. WHEELER
GRACE WOODING
KENNETH AND MICHELLE YEARGAN

BENEFACTOR \$500–\$999

ANONYMOUS
RICHARD AND PATRICIA ARRINGTON
CHRISTOPHER BABCOCK
COLLEEN DEVLIN AND GARY BARRIGAR
DEBBIE BERRY
LYLE BROWNE
DR. CYNTHIA CAMPBELL
LARRY T. SLOAN AND HELEN K. COHEN
LINDA AND FRED COWAN
DR. SUSAN DONOVAN

Donors from June 1, 2024–May 31, 2025

TRACI AND
JOHN EIKENBERRY
LESLIE AND
GREGG FOWLER
TRACY GREEN
MAUREEN MCCALL AND
RONALD GREGG
MARY AND
THOMAS HARDIN
CLARE HIRN
ROBERT KAPFHAMMER
ELIZABETH AND
DAVID KAPLAN
STANLEY AND
SALLY MACDONALD
JASON MALIN
MR. DAVID LIPP AND
RABBI LAURA METZGER
ASHLEY AND
ANDREW NOLAND
SARAH AND
CHARLES O'KON
LUE AND JOHN PEABODY
DONNA MOSER PEAK
D. PATTON PELFREY
LUKE POWELL
BYRON AND
JAHREE RAGER
DR. COLLEEN RYAN
DEANN AND
CHRIS SANDFORD
TERRIE AND
MARSHALL SELLERS
ERIK SNYDER
KIM AND DAVID TAYLOR
LESLIE TAYLOR
CAROL AND EDDIE VETTER
BRETT CORBIN AND
SAMANTHA WALLACE-CORBIN
LARRY WANDELL
J. DAVID AND INEZ WHITE
SKIP WHITE
NICHOLAS WILKERSON
SANDY AND MARY WILSON
ANN ZIMMERMAN
DEBBIE ZOGLMANN

PATRON UP TO \$499

ANONYMOUS (2)
JENNIFER AAM
KAY ADAMS
DANIELLE ADSIT
DANNY ALEXANDER
ANN TAYLOR ALLEN
PATTY ANDERSON
ANGELEA ANDREWS
KELLI AND JAMES ARCHER
TROY ASHLEY
ERIN AND JOE AVDEVICH
BARBARA BAI
KATHLEEN BAILEY
COURTNEY BAIRD
DENEEN BANNISTER
SAVANNAH BARRETT
BEVERLY BARRINGER
STEPHANIE BATEMAN
GAIL R. BECKER
GAIL BENEDICT
MICHAEL BENNETT
DIANA BENTZ
COREY SHAPIRO AND
ASHLEE BERGIN
MANLEY BERTHOLD
TERRY BISHOP
AMANDA BLAKEMAN
RHET BLUMENSCHNEIN
ADA AND KENNETH BOATRIGHT
VICTORIA BOGGS
AMANDA BOMMER-VILLAVECES
KATE AND JEFF BONNER
ANNE AND MORTON BOYD
THERESA BRADY
LINDA L. BRAUN
ANNE BRAUN
JOYCE AND EDWARD BRIDGE
JACQUELINE BRILL
DEBHRA THURSBY BROCK
DEBRHA BROCK
DARRELL BROOKE
KATHRYN AND PAUL BROTZGE
ELLEN T. BROWN
MIKELLE BRUZINA
JAMIE BUBB
KAYDEN MICHELE BURDEN
DR. CRUMP BAKER AND
DR. ALTA BURNETT
BETH BUSSELL
RONALD AND ELIZABETH BUTLER
JAMIE JARBOE AND
DOUGLAS BUTLER
SARA AND DAN CALLAWAY
BRAD AND RICARDO
CALOBRACE

ANNE AND MICHAEL CAMPBELL
MICHAEL CAMPBELL
RALPH AND BETTY CASH
CATHY CATON
BETHANY CHANEY
ROBERT CHING
JOHN CHRISTINE
JULIE AND WILLIAM CHURCHILL
DEANNA CLARK
JOHN H. CLARK IV AND
GRETCHEN CLARK
DENISE CLAYTON
LORNA CLOUD
LAN NGUYEN-COLGATE AND
DUSTIN COLGATE
ALICE AND GUS COLLIS
CHRISTOPHER COLON
GREGORY N. CORBY
NANCY COX
BRIAN CREECH
VIRGINA B. CROMER
MERCEDDES CROSTA-ROUST
DR. TRACY K'MEYER AND
GLENN CROTHERS
JOHN AND JEANNE CUMMINS
ANDREW CUNNINGHAM
HELEN DAIGLE
BRENDA DANIELS AND
JEFFERSON DALBY
DIANE R. DAVIS
MARY DAVIS
MERRY DENNY
KRISTI DITTO
CLARENCE DIXON
PATRICK AND LAUREL DOHENY
CLARE DOUGHERTY
LAURIE DUESING
CINDY DUMAS
GUY GENOUD AND
STACY DUNCAN
KATHERINE DYKE
MARY A. ELDER
DR. LEZA ELDORADO
JEFF EMERICH
ALAN AND LINDA ENGEL
PAUL ETHRIDGE
ERIN AND MITCHELL EVANS
JOHN FELTON
TONY FERRY
KEELEY T. FINN
ELAINE FINZEL
JASON FISCHER
LINDA T. FITTS
JUDGE PAULA FITZGERALD
ADELE FONTAN
HAROLD AND SUE FORD
CATHY FORD
SOFIA FRITSCHNER

STEPHANIE FULTZ
KRISTY GAINES
ELIZABETH GALLACHER
SUSAN AND TERRY GARDNER
DEBORAH GARDNER
SHERRIE GEORGE
STEVE AND
JENNY VON GERLACHER
AMY GERSTLE
ROBERT GIESZL
JAMES GILBERT
AMBER K. GIPSON
KRISTINA GODLEWSKI
LINDA AND STUART GOLDBERG
JANE GOLDSTEIN
JAN GONDER
KRISTAL GOODMAN
JADA GRADY
STEVE GRAHAM
RACHEL GRAVES
TINA GRAY
LLOYD GRAY
JEFFREY GREENBERG
CLAIRE GREENLEE
JIM AND PAT GREER
DAVID GREY
SANDAL H. GULICK
CAROLINE GUTHRIE
JOHN AND REBECCA GUTHRIE
JULIE GUY
JOHN HALE
MARIE HALEY
BILL AND JUDY HALIDAY
KELLIE HALL
JANE HALLIDAY
STRATTON HAMMON
MARK HAMMOND
NANCY S. HANCOCK
MARY C. HARDIN
SARAH AND DONALD HARLAN
MARCIA LEE HARLOW
ELIZABETH HARTWELL
HANNAH HATCH
BENJAMIN HAYDON
WILLIAM M. HAYES
THOMAS HEAVRIN
RICK HEAVRIN
STEPHANIE HEDGES
DR. ERIN HERSTINE
JAIME HEUN
KEVIN HINTON
MALIYAH HODGES
AUBREY HOLLE
RICHARD AND
MAUREEN HOLSTON
KATHY AND JAMES HOLTGRAVE
TRACIE HOLTON
MEGAN AND DYLAN HOOK

MARIANNE HOPEWELL
MARK HOPKINS
JOE AND TERRESA HOPKINS
JO NELL HOUSE
THOMAS HOUSE
SAMUEL HOUSE
GERALD AND MARY HUBBS
JON HUFFMAN
COURTNEY HUNTER
CHLOE HUTTO
WILLIAM C. SCHRADER, III
PAUL TIGUE III
JAMES INGE AND
CATHERINE GAGLIO INGE
DR. THOMAS JAMES
JEFFREY AND
MARGARET JAMNER
JILL AND FRANKLIN JELSMAN
SARAH ST. JOHN
ALICE JOHNSON
RICHARD JOHNSON
OLIVIA JOHNSON
DR. DOUGLAS JOHNSON
MAKAYLA KANERVIKO
CLAY KANNAPELL
MRS. MARGARET KARMAN AND
DR. ROBERT KARMAN
DICK AND GAIL KAUKAS
MARY CAROL KAYS
SANDRA RICHARDSON AND
DON KEELING
KAREN KEITH
LASHON KELL
JULIA KENDRICK
MK KERNAN
KATHERINE KING
JENNIFER KING
SUZIE KINMAN
MONICA KIPER
CINDY KIRKPATRICK
HALEY KLEIN
JONATHAN KLINGENFUS
DOUGLAS KLOOS
SARA KMACK
MARCELLA KRAGEL
SUSAN HAMILTON AND
ED KREBS
JEAN KREKE
KATHLEEN KRONAUER
NORAH KUTE
LINDA LABBADIA
MEGAN ANN LAFAVE
NANA LAMPTON
RICHARD BADARACCO AND
JO LAWLESS
LYLE LAWSON
DR. RONALD LEHOCKY
TIMI LENTZ
SONIA LEVINE

JENNIFER LINDSAY
SHARY LOEWY
SHANE LOGAN
KATIE LONG
MICHAEL MARTIN
LOSAVIO
SARAH LOSSON
RT. REV DAVID REED
AND CATHERINE LUCKETT
CHRISTIE LUELLEN
LAUREN LYDON
JOSEPH LYONS
JAMA AND
FRANK MACKIN
VALERIE MAHURON
SARAH MARIA
RON MARIANO
EVELYN MASTERS
LISA AND
MARK MATTHEWS
SUA ANN MATTOX
JOHN MCBROOM
HEATHER MCCALL
MATTHEW MCGARVEY
KIMBERLY MEFFERT
EMMA MELO
CHRISTINE MERRITT
BEN VAN METER
GAIL MICHAEL
DOUG AND
LINDA MICHAEL
SUZETTE MIGUEL
ROWLAND MILLER
CYNTHIA MILLER
JENNIFER LOREN
BINGHAM MILLS
GUY AND GENEVIEVE
MONTGOMERY
MURIEL MOORE
PATRICK MOORE
SCOTT AND
YVETTE MORRIS
JILL MORZILLO
RANDY AND
LAURIE MYER
PAMELA NATION
MARTHA NEWMAN
REGAN AND
MATTHEW NICHOLS
JENNY NIRMAIER
DONALD NORMAN
ERIN OBENAUF
SHARON OBENAUF
JOY O'BRYAN
BARBARA AND PATRICK
O'DANIEL-MUNGER
MARY AND
PATRICK O'SHEA
JOANNA AND
LYNDALL OVERSTREET

LAUREN OWENS
DAVID PANTERA
ERIC AND
MARTHA PECCEU
DONNA PEMBERTON
TARA GARDNER PERRY
LILI PETERS
SUSAN POINTER
VIRGINIA POLLITT
TORI POWELL
TRACY NICHOLE
POWELL
SCOTT AND
MOLLY PRINCE
KACI PRUNTY
CAMY PRUSS
DENNIS PUFFER
JESSICA PURSER
GERARDO RACHUMI
KATY RAHLA
ANN RAMSER
AUDRA RANKIN
STEPHANIE AND ALEX
RANQUIST
MARY ALICE REESE
THOMAS REID
GINGIE REISZ
RHONDA RESKIN
SARAH H. RHYNE
KATHERINE
BIAGI-RICKERT AND
TONY RICKERT
MARY ANN RIDGE
VERONICA RIGGS
MARIANO RIVERA
LYNDA M. ROBERTSON
DENNIS ROBINSON
CHRISTA FALINE
HILL RODMAN
DINNIE ROGERS
RON AND RIO ROSS
MITCHELL ROSS
SUSAN ROSTOV
ROBERT AND
MARY ROUNSAVALL
CARRIE ROW
JAVAN ROY-BACHMAN
DENISE CARROLL AND
BILL RUSSELL
RAFFAELLA RYBARCZYK
JACOB AND
JENNIFER SABEL
ROBERT AND
FELICE SACHS
LOUISE SACHS
DANIEL AND
JUANITA SANTOS
ROBIN SCHALDA
FRANCES SCHAUMAN
VICTORIA SCHMIT

JO ANNE SCHNEIDER
SHIRLEY SCHNERINGER
FRANCES SCHNUERLE
TINA AND
GEOFF SCHNUERLE
NIKKI SCHREINER
DONNA SCHUSTER
MADISON SCHWITZER
DR. SUSAN ZEPEDA AND
DR. FRED SEIFER
DAVID SENTI
DOUGLAS SHAPIRO
ALINA SHAVER
SANDRA FERNANDEZ
SHEEHY
ALYNN AND
ANDREW SHERMAN
KATHRYN SIDES
DWIGHT KYLE AND
CINDY SILETTO
PAULA SLEEMAN
DANIEL MOYERS AND
BARBARA SMITH
GAGE SMITH
OLGA SNYDER
LENNA SOLTAU
JAMES AND NAN
SPALDING
LAURA SPAULDING
NICK GAGLIO, SR.
EDGAR AND
TERRY STANTON
DR. VICTORIA STATLER
JOSEPH STEINHAEUER
ALISON AND
BILL STEMLER
MR. DAVID STIERLE
KATHLEEN STOCKER
EDWARD AND
JOAN STONE
BABSRA STONE
GORDON AND
CATHERINE STRAUSS
ANITA STREETER
BRIAN STRUNK
ROSALIE SURTEES
PHILIP AND
ESTHER TAMPLIN
JENNIFER TAYLOR
RACHEL TERRY
LYNN THERIOT
CAROL K. THOMPSON
DR. JOSEPH
THOMPSON AND
MRS. ANN THOMPSON
TAWNEE THOMPSON
PAUL THOMPSON
LEATHA THURMAN
DAVID AND
DIANE THURMOND

LINDA TILLER
ELLEN TIMMONS
PATRICIA TINSLEY
MRS. CAROL TITTEL AND
DR. PAUL TITTEL
THE LATE
ROSE MARY TOEBBE
JOHN TRAGESER
LACEY LIANNE
TRAUTWEIN
GRETCHEN
TREITZ-MARTIN
GEORGIA TURNER
DWIGHT TURNER
BRAD TURNER
GWATHMEY AND
GINNY TYLER
VICKY TYREE
HECTOR URDANETA
DENISHA VAUGHN
ELLEN VENHOFF
INTA K. VOIGHT
JEANNE VUTURO
JANET WALTHER
BRANDT WAMSLEY
SHANNA WARD
ANNIE WEBER
RONALD WEBER
JOE WEISENBERGER
MARY JO WETZEL
MICHELLE BLACK WHITE
AND DR. DAVID WHITE
PORTIA WHITE
DONALD WHITFIELD
SUSAN WILBURN
JANELLE WILHELM
KEISHA WILLIAMS
MARY BETH WILLIAMS
DENISE WILSON
ANDREA WILSON
MARIE WILSON
MONICA WINTERS
CHRISTINA WISEMAN
KENNETH WOOTON
KATHRYN WRIGHT
DENNIS S. WUNDERLICH
JULIE WUNDERLIN
ANNE AND
EDWARD WUNSCH
MARGARET YOUNG
ASHLEY YOUNG
JUDITH AND JOHN
YOUNGBLOOD
DR. KENNETH ZEGART
AND MRS. SHELLY ZEGART
JULIE ZOELLER

IN-KIND

CORPORATIONS
ACTORS THEATRE OF
LOUISVILLE
ANNA'S ADDITIONS
ASHLEY ROUNTREE AND
ASSOCIATES
BARRY WOOLEY
DESIGNS
BRIGHTSIDE
FOUNDATION
BUZZARD'S ROOST
CULTURED CHEESE AND
CHARCUTERIE BAR
DAVIS JEWELERS
DENTONS BINGHAM
GREENEBAUM
EUROTARD DANCEWEAR
FROST BROWN TODD
HEAVEN HILL BRANDS
HERITAGE WINE AND
SPIRITS
IN BLOOM AGAIN
JACK FRY'S
JONESTARR INC
KENTUCKY DERBY
FESTIVAL
KENTUCKY
PERFORMING ARTS
KORT
LE RELAIS
LOUISVILLE CITY FC
LOUISVILLE ORCHESTRA
OLMSTED PARKS
CONSERVANCY
POE COMPANIES
PREPPING WITH
PEPPERS
RIVER HOUSE
RESTAURANT AND
RAW BAR
SHERWIN WILLIAMS
COMPANY
SIGNARAMA
SPEED ART MUSEUM
SPIRITLESS
THE GALT HOUSE
TODAYS WOMAN
UNBRIDLED CHARITABLE
FOUNDATION, INC.
UNIFIED TECHNOLOGIES
VIVID IMPACT
WELCH PRINTING, INC.
WHISKEY ROW HOTEL
COLLECTION
• HOTEL DISTIL
• MOXY
• ALOFT
• HOMEWOOD

INDIVIDUALS
ANONYMOUS (3)
ERICA BACHELOR
DEBBIE BERRY
KEVIN BROWN
SEAN & VENNITA
CANTRELL, CHILDREN
OF THE ARTIST JIM
CANTRELL
TONI CLEM
KIMBERLY AND
DAN COLÓN
PAM AND TOM FALUDY
JIM AND SARA HAYNES
JODY HELD
GARETH JONES
DR. THOMAS LOEB
RIQUE
ELLEN AND MAX
SHAPIRA
KATHRYN SHAVER
ALYNN SHERMAN
LESLIE AND
JOHN SMART
BILL AND MARY
STRENCH
KELLY TASSIN
ZACH WARDLAW
ELIZABETH WINDISCH

THE BRUCE SIMPSON FUND

The Bruce Simpson Fund
or the Fund for Louisville
Ballet Artists provides
annual income to support
dancer salaries. For more
information, please contact
502.583.3150 ext. 238 or
Regan Nichols,
rnichols@louisvilleballet.org.

MEMORIAL

+

HONORARY GIFTS

KELLI AND JAMES
ARCHER IN MEMORY
OF DORIS ARCHER

ANDY AND MICHELLE
ARNOLD IN HONOR
OF LESLIE SMART AND
GWYNETH HOLLIDAY

GAIL R. BECKER IN
MEMORY OF
MINX AUERBACH

MOLLY BINGHAM IN
HONOR OF
EDITH BINGHAM

KATE AND JEFF BONNER
IN HONOR OF
SHELBY SHENKMAN

LINDA L. BRAUN
IN HONOR OF
FORMER DANCERS OF
LOUISVILLE BALLET

DEBHRA THURSBY
BROCK IN MEMORY OF
PATSY ASHBY DRAKE

ELLEN T. BROWN
IN HONOR OF HELEN
JONES STARR

LYLE BROWNE
IN HONOR OF HELEN
STARR AND IN MEMORY
OF ALUN JONES

JOHN H. CLARK IV AND
GRETCHEN CLARK
IN MEMORY OF
MINX AUERBACH

LAN NGUYEN-COLGATE
AND DUSTIN COLGATE
IN HONOR OF
SHELBY SHENKMAN

VIRGINA B. CROMER
IN HONOR OF
HELEN STARR JONES

JOHN AND
JEANNE CUMMINS
IN MEMORY OF
MINX AUERBACH

LAURIE DUESING
IN HONOR OF
KATERYNA SELLERS

FRANCES DUMBAUGH
IN HONOR OF
GLENN WALLACE

JANE AND BERT EMKE
IN HONOR OF
K. SHAVER

JANE AND BERT EMKE
IN HONOR OF
LESLIE SMART

ELAINE FINZEL
IN HONOR OF
ELIZABETH WINDISCH

CHERYL AND
EUGENE GILCHRIST
IN HONOR OF
HELEN DAIGLE

JANE GOLDSTEIN
IN HONOR OF
LARRY STEINBERG

STEVE GRAHAM
IN MEMORY OF
CHARLOTTE GRAHAM

CLAIRE GREENLEE
IN MEMORY OF
ALUN JONES

HALLWAY FEEDS
IN MEMORY OF
MINX AUERBACH

STRATTON HAMMON
IN HONOR OF
EKATERINA
KRYSAKOVA.

MARY AND
THOMAS HARDIN
IN HONOR OF
LESLIE SMART

MARY HARPER IN
HONOR OF CLARA
HARPER

ALBIN B. HAYES, JR.
IN MEMORY OF
ANNE F. HAYES

CLARE HIRN
IN HONOR OF
ELIZABETH WINDISCH
AND METAMORPHOSIS

KATHY AND
JAMES HOLTGRAVE
IN MEMORY OF
ALUN JONES

JAMES INGE AND
CATHERINE GAGLIO
INGE IN HONOR OF
"THE LITTLE BEAR"

DR. THOMAS JAMES
IN MEMORY OF
EDYTH WHEELER

DR. DOUGLAS
JOHNSON IN MEMORY
OF BARBARA JOHNSON

HUGH JONES
IN HONOR OF
LESLIE SMART AND
KATERYNA SELLERS

HUGH JONES
IN HONOR OF
SHELBY SHENKMAN

MARY CAROL KAYS
IN HONOR OF
MOLLY KAYS

JEAN KREKE
IN MEMORY OF
DEBORAH FILLEBROWN

MADISON SCHWITZER
IN HONOR OF
ELIZABETH WINDISCH

DR. THOMAS LOEB
IN MEMORY OF
EDWIN PERRY

MICHAEL MARTIN
LOSAVIO
IN MEMORY OF
MINX AUERBACH

LISA AND
MARK MATTHEWS
IN MEMORY OF
ANNE HAYES

NANA LAMPTON
IN MEMORY OF
MINX AUERBACH

PETE LAY
IN HONOR OF
KATERYNA SELLERS

DR. THOMAS LOEB
IN MEMORY OF
EDWIN PERRY

MICHAEL MARTIN
LOSAVIO
IN MEMORY OF
GEORGEANNA DULANY
LOSAVIO

MICHAEL MARTIN
LOSAVIO
IN MEMORY OF
MINX AUERBACH

LISA AND
MARK MATTHEWS
IN MEMORY OF
ANNE HAYES

CHRISTINE MERRITT
IN HONOR OF
CHLOE PUFFER

BARBARA AND PATRICK
O'DANIEL-MUNGER
IN HONOR OF
HAZEL HARTLEY

CHARLES AND
SARAH O'KOON
IN HONOR OF
HOWARD BERMAN

DAVID PANTERA
IN HONOR OF
ELEANOR JANE PRINCE

D. PATTON PELFREY
IN MEMORY OF DR.
JOHN C. O'BRIEN, JR.
AND GLADYS PENICK
POPE

SUSAN POINTER
IN MEMORY OF
NORMAN POINTER

MARY ANN RIDGE
IN HONOR OF
DANIEL MALLOT

SARAH H. RHYNE
IN HONOR OF
BRUCE SIMPSON

ROTH FAMILY
FOUNDATION
IN HONOR OF
DR. ALAN ROTH AND
HIS LIFETIME OF

CONTRIBUTIONS TO
LOUISVILLE BALLET

MARIA SCHERER
IN HONOR/MEMORY
OF HELEN STARR AND
ALUN JONES

MADISON SCHWITZER
IN HONOR OF
ELIZABETH WINDISCH

DR. MYROSLAVA
ROMACH AND DR.
EDWARD SELLERS
IN HONOR OF
KATERYNA SELLERS

ELLEN AND
MAX SHAPIRA
IN HONOR OF
SHELBY SHENKMAN'S
RETIREMENT

ELLEN AND MARK SITES
IN MEMORY/ HONOR
OF ALUN JONES AND
HELEN STARR

LESLIE AND
JOHN SMART
IN MEMORY OF MIMI
WATHEN DINGMAN

LESLIE AND
JOHN SMART
IN MEMORY OF
DEBORAH FILLEBROWN

DAVID STIERLE
IN MEMORY OF
BILLIE STIERLE

BRIAN STRUNK
IN HONOR OF
KATERYNA SELLERS

LINDA TILLER
IN MEMORY OF
DON GLASER AND
GENE STOTZ

ELLEN TIMMONS
IN HONOR OF
K. SHAVER AND
IN MEMORY OF
EDWIN PERRY

ELLEN VENHOFF
IN HONOR OF
LESLIE SMART

INTA K. VOIGHT
IN MEMORY OF THE
LATE FORREST B. VOIGHT

DR. ALAN ROTH AND
FAYE WEINBERG
IN MEMORY OF
EDWIN PERRY.

DR. ALAN ROTH AND
FAYE WEINBERG
IN HONOR OF
SHELBY SHENKMAN'S
BALLET CAREER

DONALD WHITFIELD
IN HONOR OF
LESLIE SMART

SUSAN WILBURN
IN HONOR OF
LESLIE SMART

GRACE WOODING
IN HONOR OF LISA
BIDDLE-PUFFER

JUDITH AND JOHN
YOUNGBLOOD
IN HONOR OF
LESLIE SMART

DR. KENNETH ZEGART
AND MRS. SHELLY ZEGART
IN HONOR OF
JESSICA LOVING AND
A TIME REMEMBERED

DR. KENNETH ZEGART
AND MRS. SHELLY ZEGART
IN HONOR OF
JESSICA LOVING AND
A TIME REMEMBERED

DR. KENNETH ZEGART
AND MRS. SHELLY ZEGART
IN HONOR OF
JESSICA LOVING AND
A TIME REMEMBERED

DR. KENNETH ZEGART
AND MRS. SHELLY ZEGART
IN HONOR OF
JESSICA LOVING AND
A TIME REMEMBERED

DR. KENNETH ZEGART
AND MRS. SHELLY ZEGART
IN HONOR OF
JESSICA LOVING AND
A TIME REMEMBERED

DR. KENNETH ZEGART
AND MRS. SHELLY ZEGART
IN HONOR OF
JESSICA LOVING AND
A TIME REMEMBERED

DR. KENNETH ZEGART
AND MRS. SHELLY ZEGART
IN HONOR OF
JESSICA LOVING AND
A TIME REMEMBERED

DR. KENNETH ZEGART
AND MRS. SHELLY ZEGART
IN HONOR OF
JESSICA LOVING AND
A TIME REMEMBERED

DR. KENNETH ZEGART
AND MRS. SHELLY ZEGART
IN HONOR OF
JESSICA LOVING AND
A TIME REMEMBERED

DR. KENNETH ZEGART
AND MRS. SHELLY ZEGART
IN HONOR OF
JESSICA LOVING AND
A TIME REMEMBERED

DR. KENNETH ZEGART
AND MRS. SHELLY ZEGART
IN HONOR OF
JESSICA LOVING AND
A TIME REMEMBERED

BOARD OF DIRECTORS

K. SHAVER

President

PAMELA THOMPSON

Vice President

JAMES E. HAYNES**

Treasurer

MATTHEW E. HAMEL

Secretary

ERICA BACHELOR

LISA BIDDLE-PUFFER

KIM BOLAND, MD

TANYA BOWMAN

MIKELLE BRUZINA*

LINDY CASEBIER*

CAROLLE JONES CLAY

TONI CLEM

JANET M. DENUYL

LEE DORSEY

SHERRY M. FELDPAUSCH

MAYOR CRAIG GREENBERG*

JOHANNA G. HOWARD

EMMA C. HUTCHENS

ALAM KAMEI

KAREN KOSHEWA*

ROY MATTINGLY JR.

ALLISON O'GRADY

STEVE POE

SHARON POTTER

SHAHARA ROSS*

ELLEN HIRSCH SHAPIRA

ANTON SKOBELEV

LESLIE SMART*

JOHN A. STOUGH JR.

WILLIAM STRENCH

KENJI TASHIRO

CARL THOMAS

JAMES R. VOYLES

DONALD G. WENZEL JR.

MICHELLE BLACK WHITE

DONALD WHITFIELD

BUCK WISEMAN

HONORARY

LEE PURCELL BEST

SHIRLEY DUMESNIL

PEGGY FOWLER

ALEXANDRA GERASSIMIDES, MD

PAULA GRISANTI

MARLENE GRISSOM

SUSAN GRUBBS

BETH KLEIN

NANCY MARTIN

THE LATE PHIL PAYNE

D. PATTON PELFREY

BARBARA SEXTON SMITH

K. SHAVER

LARRY J. STEINBERG

MARGY THOMAS

STATE ADVISORY COUNCIL CONGRESSIONAL DISTRICT REPRESENTATION

1st District

ASHLI WATTS

2nd District

REGINA A. JACKSON

3rd District

CHRIS MCGARVEY

4th District

TARA JOHNSON NOEM

5th District

OPEN

6th District

BEN HAYDON

The Board of Directors wishes to acknowledge the following former Board members who passed away in 2024.

We are grateful for their dedication, leadership, and commitment to our mission.

**THE LATE ELEANOR "ELLIE"
DURALL BROWN MOORE**

**THE LATE ALICE CARY
FARMER BROWN**

*Ex Officio **Former President



HELP US KEEP THE LIGHTS
BRIGHT!

Donate today to support the Artists
and artistry of Louisville Ballet

SCAN HERE

louisvilleballet.org/contribute

